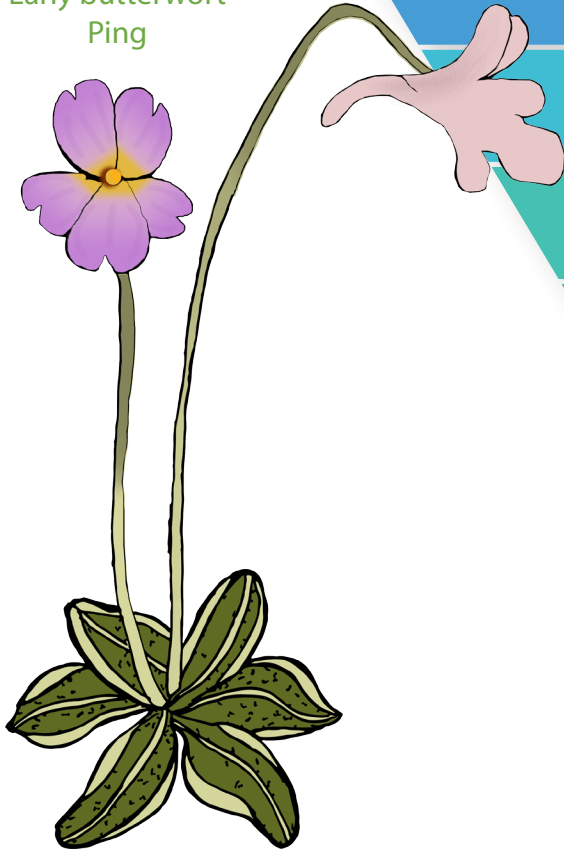


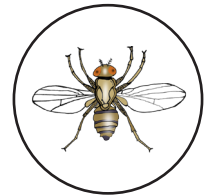
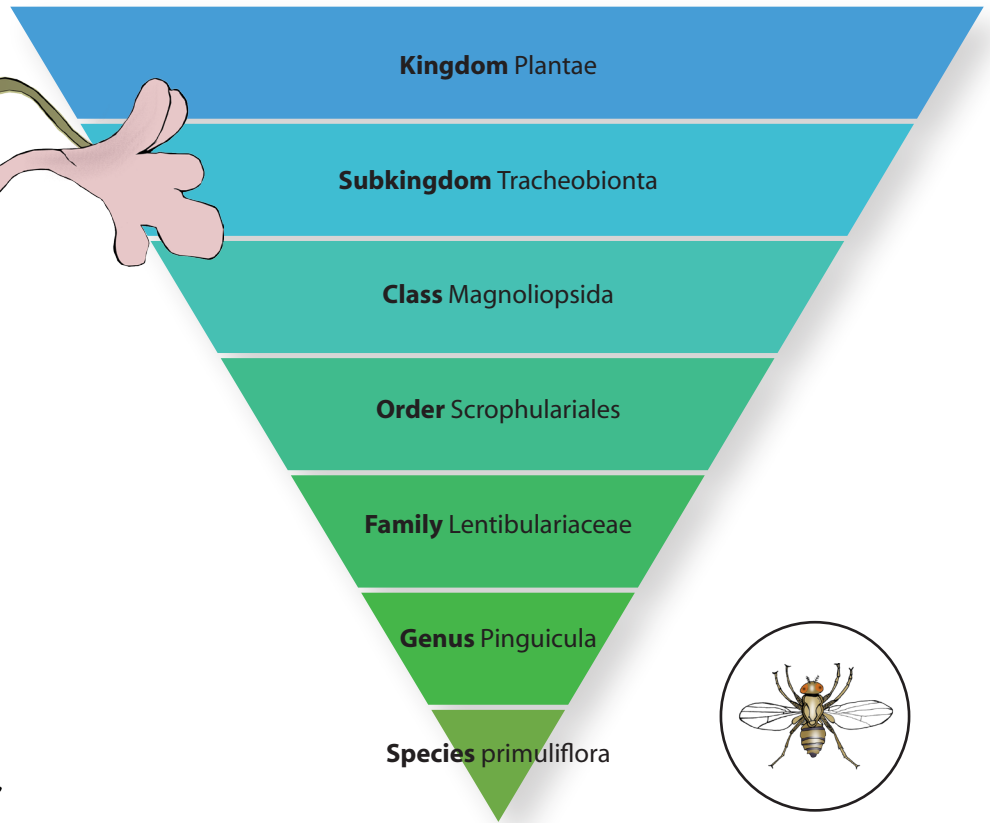
Pinguicula primuliflora

Nicknames

Southern butterwort
Primrose butterwort
Early butterwort
Ping



Pinguicula primuliflora



Attract and capture small flying insects indoors or outdoors quite easily. If prey is not present, a small amount of fish flakes can be added to a leaf.



Keep a dish underneath the pot to keep soil wet year-round. They can survive being submerged for several days, but do not require it.



Does not require a dormancy period. May slow down growth in cooler weather.



Can be grown indoors, on a windowsill or in a terrarium.



Southeastern United States



Filtered light.



Equal parts sand and sphagnum peat moss or all sphagnum moss.



Small insects.

SYMBOL KEY

Nutrients

Water

Winter Dormancy

Indoors

Habitat Range

Light

Soil

Prey



carnivorousplants.org